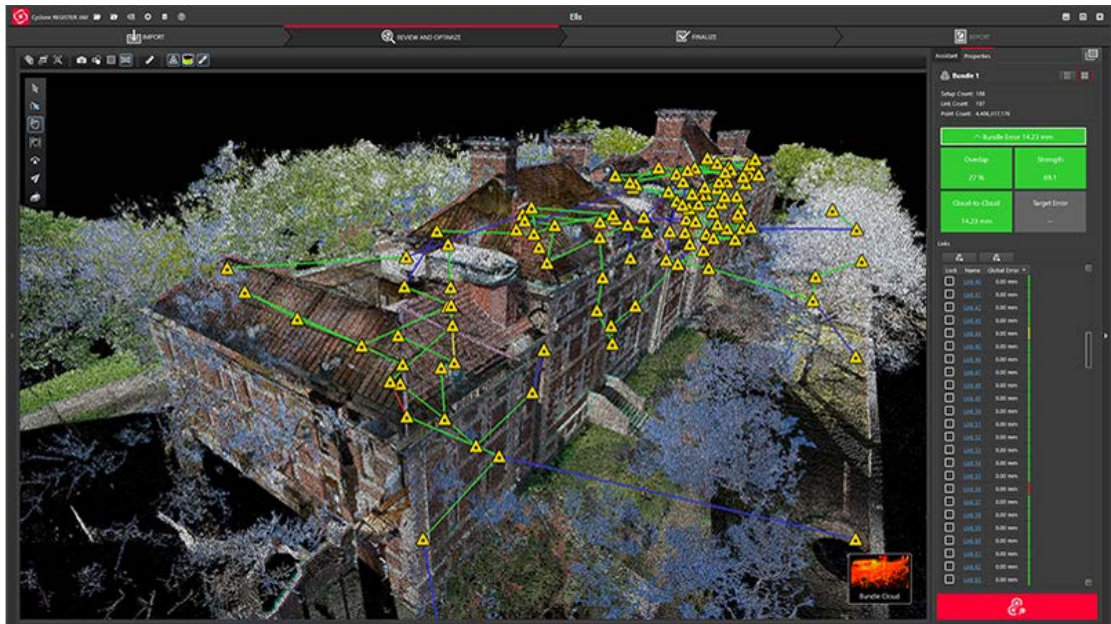


Leica Geosystems QuickStart Guide

Product Leica Cyclone REGISTER 360 1.5.0
Date 20 August 2018
From HDS Software Product Management

Contents

Introduction	2
Installation.....	3
Licensing Setup	4
Basic Workflow	6
Launch	7
Basic Configuration	7
General Settings	8
Link Settings	8
Cloud-to-Cloud options	8
General Registration Information	11
Import of Scanner data from the RTC360 scanner.....	11
1.1.1 Import RTC360 data	12
1.1.2 Geolocations of RTC360 Setups.....	12
1.1.3 Automatic registration from RTC360	14
1.1.4 Double Scan Cleaning.....	20
1.1.5 HDR Panoramic Images.....	20
1.1.6 HDR point clouds.....	20
Import.....	20
Review and Optimize	28
Finalize.....	34
Report	36



Introduction

Welcome to Cyclone REGISTER 360. Below you will find a simple guide for getting started in the software.

Cyclone REGISTER 360 is designed to bring speed, scale and simplicity to your digital reality workflows thanks to a new visual project interface and guided workflows. New and experienced users alike will appreciate that the registration process has been streamlined while maintaining the uncompromising quality you have come to expect of Leica Geosystems' software solutions.

Many users will require little to no assistance to complete their first project while some users who are completely new to the registration process may find it helpful to read this quick start guide in full.

Please remember that every project will present its own challenges. This guide is not designed to address every possible scenario but rather to provide a framework which should be modified and amended based on project needs.

If you require more advanced help, please review the resources in the assistant panel (discussed below) or contact Leica Geosystems' expert support staff.

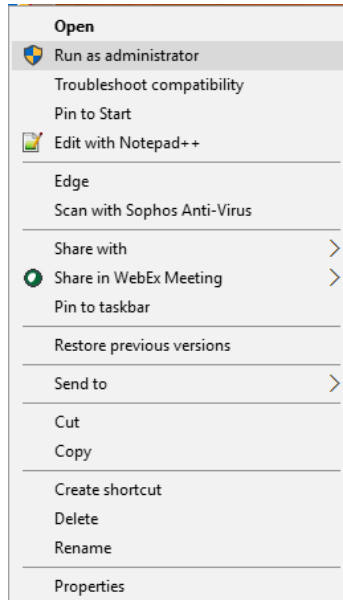
Thank you for choosing Cyclone REGISTER 360.

-The Leica Geosystems HDS Software Product Management Team

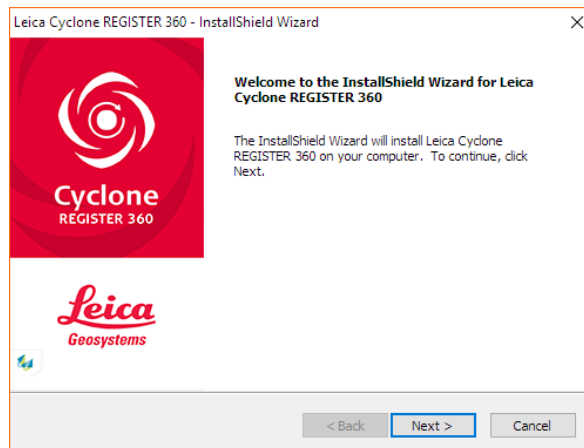
Installation

NOTE! You must have Administrative privileges on your computer to correctly install and license Cyclone REGISTER 360.

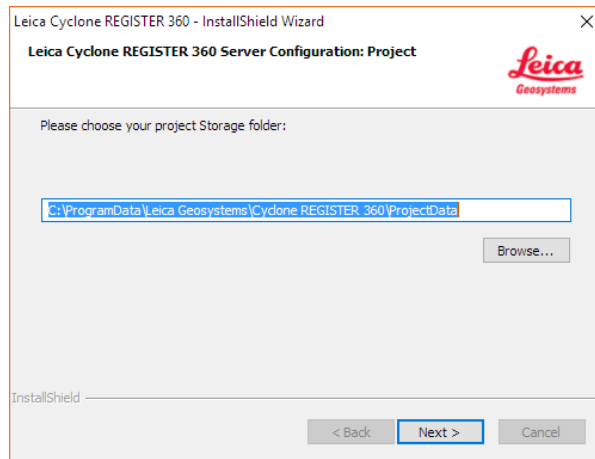
1. Right-click on the Cyclone REGISTER 360 Setup File and select "run as administrator".



2. Follow the directions in the InstallShield Wizard.



3. When prompted, choose your Project Storage location.



NOTE! The storage folder for Cyclone REGISTER 360 should NOT be the same folder as the JetStream Storage folder if JetStream is installed on the same computer.

4. Complete the installation by selecting “Finish”.

Licensing Setup

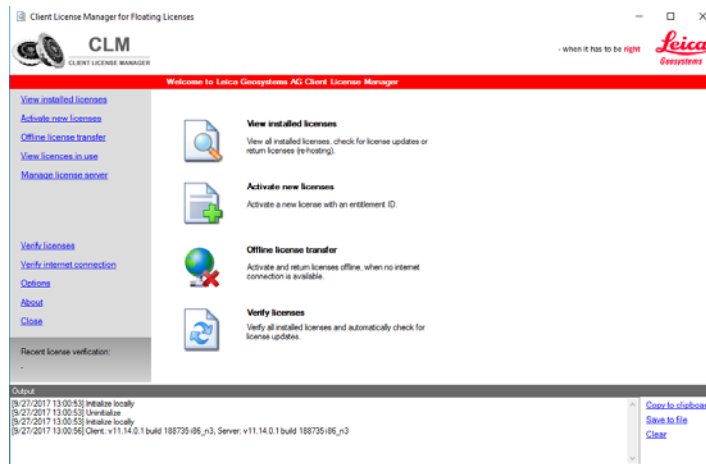
Leica Cyclone REGISTER 360 will run for any user with a valid Cyclone REGISTER license with current CCP or CCP valid as late as September 1, 2017. (It will run non-concurrently to Cyclone REGISTER.)

For users running Cyclone REGISTER 360 off its own license, please follow the below instructions to activate your license.

NOTE! Leica Cyclone REGISTER 360 is only supported by the latest version of the Leica Client License Manager (CLM), version 1.6.2 or newer.

NOTE! You must have an Internet connection to enable your license. If you do not, please review our “Leica Cyclone and CloudWorx Client License Management System” document that goes over setting up an Entitlement ID (i.e., license) off-line.

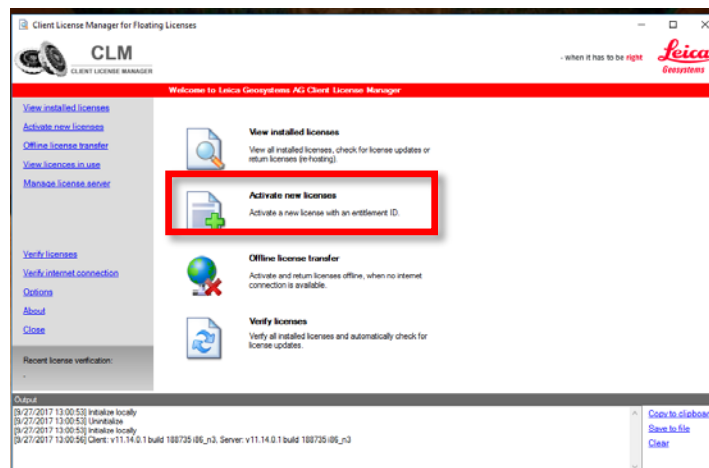
1. Once you have installed Cyclone, open the Client License Manager for **Floating** Licenses.



2. Located here: Start Menu/All Programs/Leica Geosystems/Client License Manager

NOTE! Be sure to choose the Floating option (there are two CLMs and the Nodelocked CLM will not activate your license)

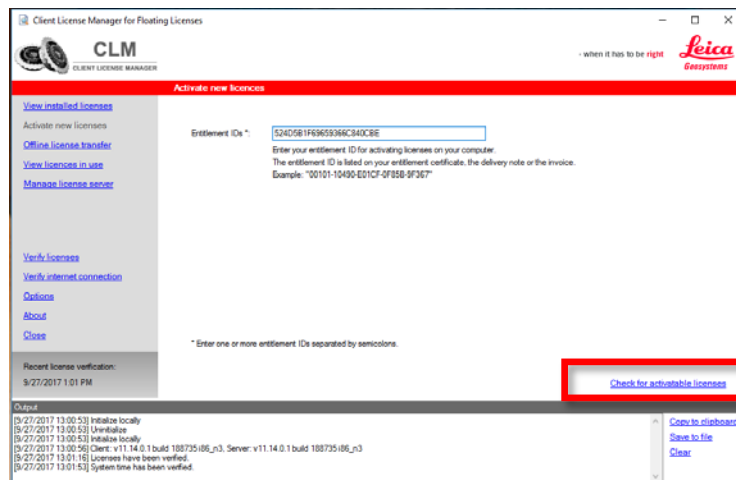
3. Choose the "Activate new licenses" option.



4. Enter your Entitlement IDs (EID) in the open field. To enter multiple EIDs separate them with a semicolon ";"



5. After you have entered your EID choose the "Check for Activateable licenses" link in the bottom right of the page



6. Once your licenses are activated you can start using Cyclone REGISTER 360.

Basic Workflow

Cyclone REGISTER 360 guides the user through the registration process. At the top of the software window you will see a workflow bar that includes four steps:

- (1) **Import**
- (2) **Review and Optimize**
- (3) **Finalize**
- (4) **Report**

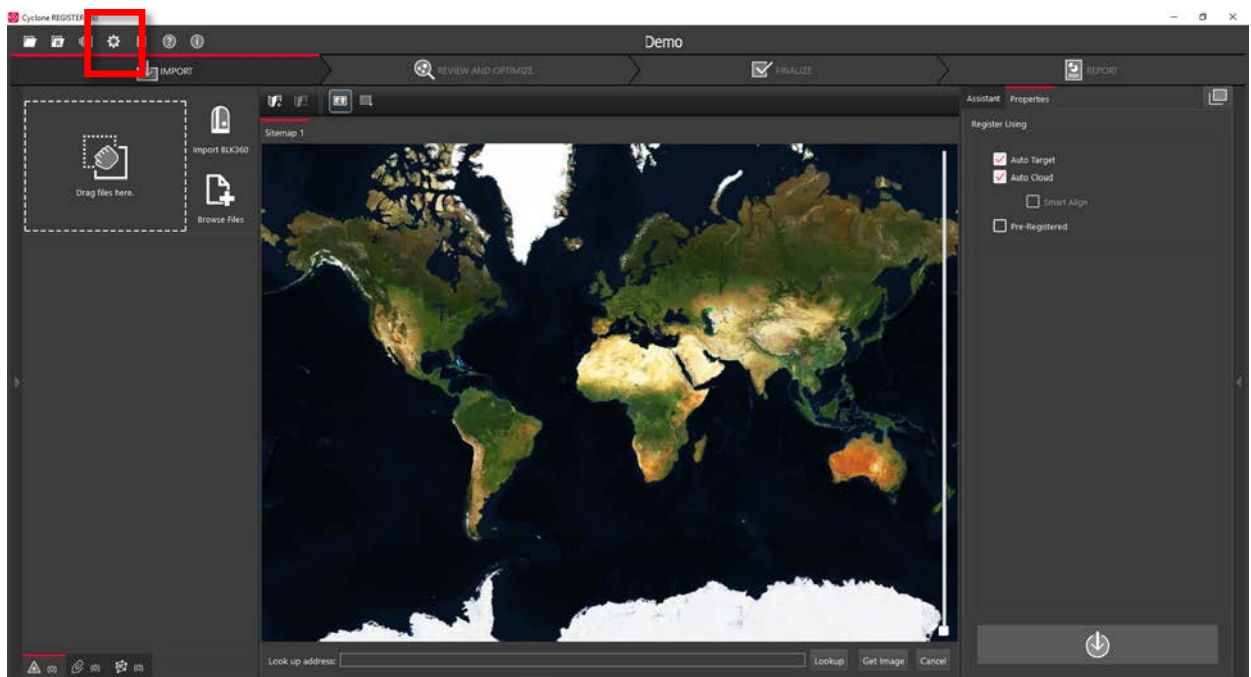
These will be the four major stages of your project. Below, we will walk you through a basic end-to-end workflow within Cyclone REGISTER 360. **This is not intended to be exhaustive.** You should reference the built-in assistant panel and help files for more detailed guidance. If you need more information about any tool, hover over the button and press F1 to be sent to the glossary or command index entry for the button within the helpfile.

Launch

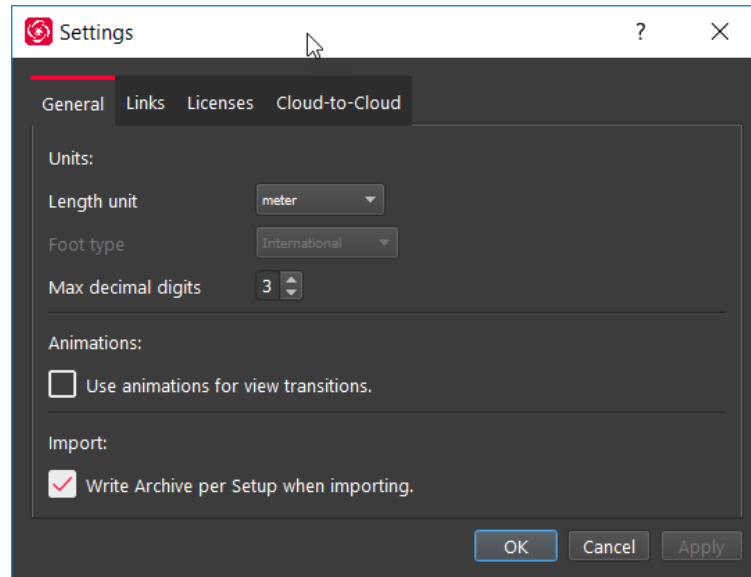
1. To begin, launch Cyclone REGISTER 360.
 - 1.1. The software will open on the Project Explorer Window.
2. Either open an existing project or click "Create New Project"
 - 2.1. Enter a project name and click "OK"

Basic Configuration

Once the program is opened you can access the settings options from the title tool bar in the upper left of the program.



General Settings

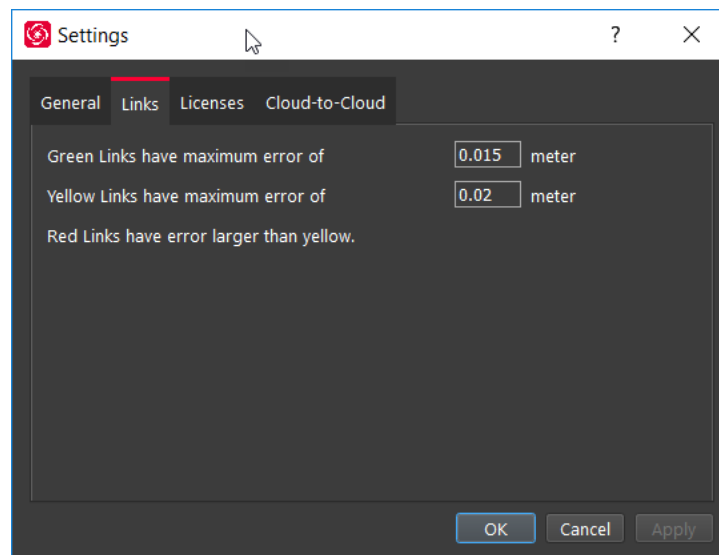


Once you open the Settings dialog, the General tab will allow you to change your default units of length as well as set your preferred decimal precision.

In this tab you also have the option to turn off the creation of Setup Archives during import, this setting enables the creation of archive files and is required for most publishing options.

In this tab you can also turn off transition animations that occur when moving between setups or otherwise changing views.

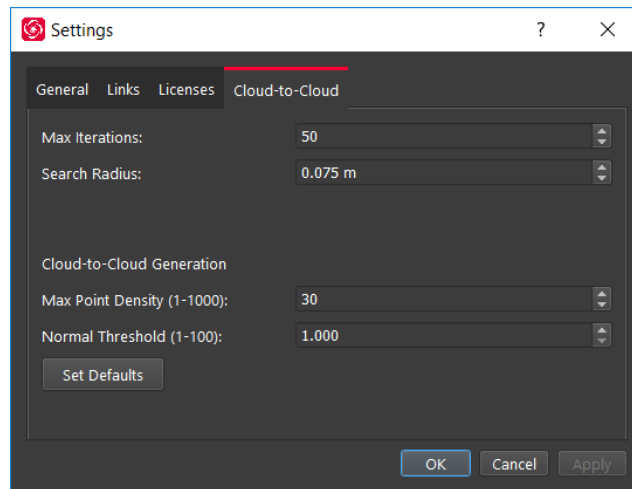
Link Settings



The Links tab allows you to customize your error thresholds for Links. You can adjust what levels of error will be represented by your green/yellow/red link lines. By default, these will be set to 0.015 and 0.02 m respectively.

Cloud-to-Cloud options

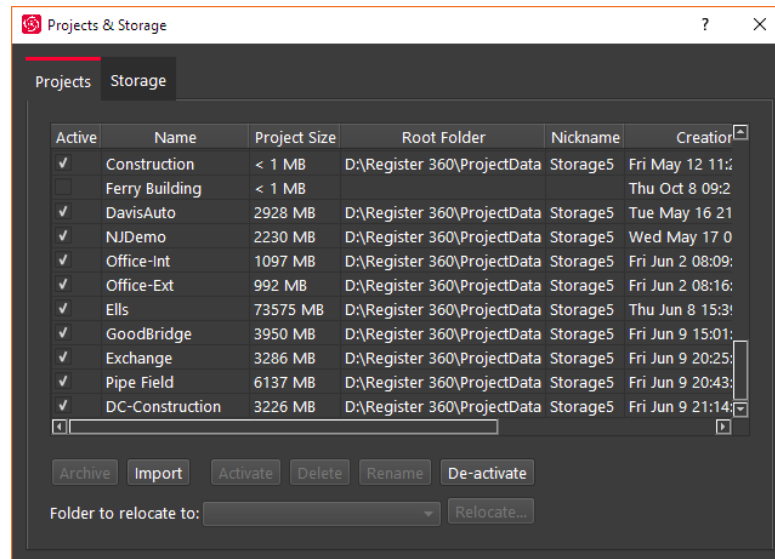
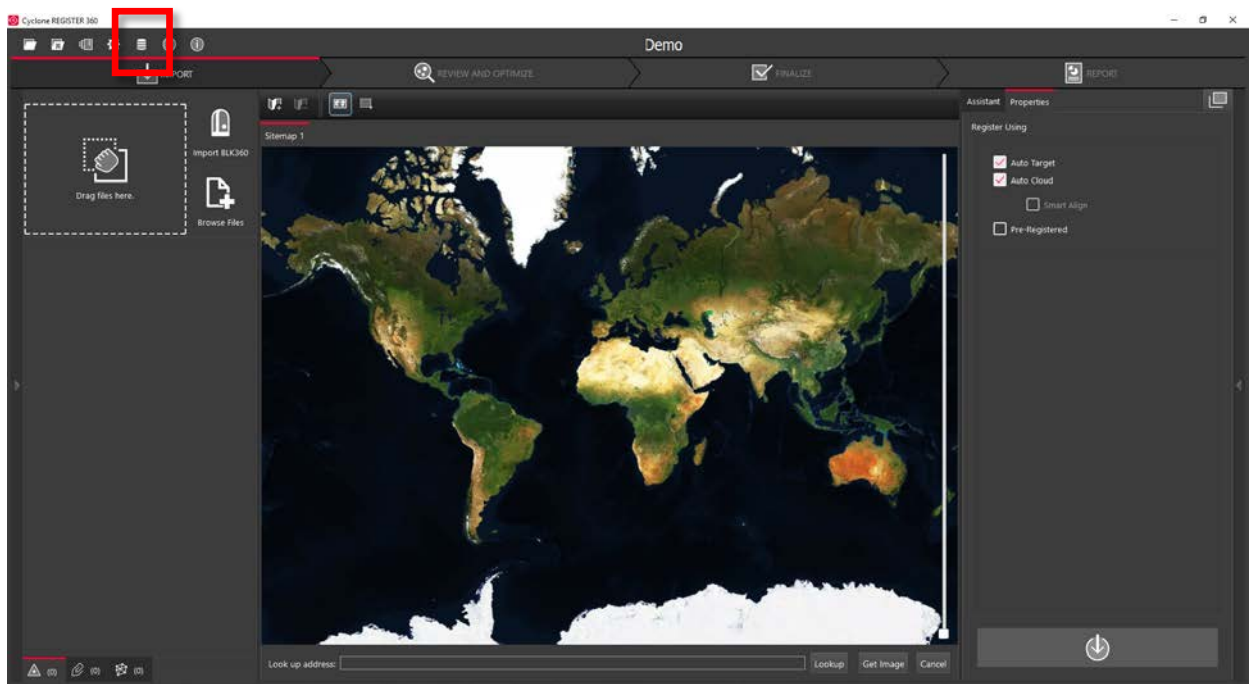
Options that control how Cloud-to-Cloud operates can be found in the setting menu.



- **Max Iterations:**
 - This is how many times the programs will try to fit the clouds together before completing the alignment.
- **Search Radius:**
 - This setting sets the search radius for matching surfaces
- **Max Point Density:**
 - Will increase the density of the Cloud-to-Cloud points used in the process
- **Normal Threshold:**
 - During Cloud-to-Cloud formation, the normal threshold is used to determine how valid the surfaces are. A higher value means that the surfaces do not need to be as valid. The result of a higher value would be more surfaces, but potentially lower validity of the surfaces created.

Projects

Click the Project & Storage icon in the upper left title bar to adjust storage folder locations and other project settings.

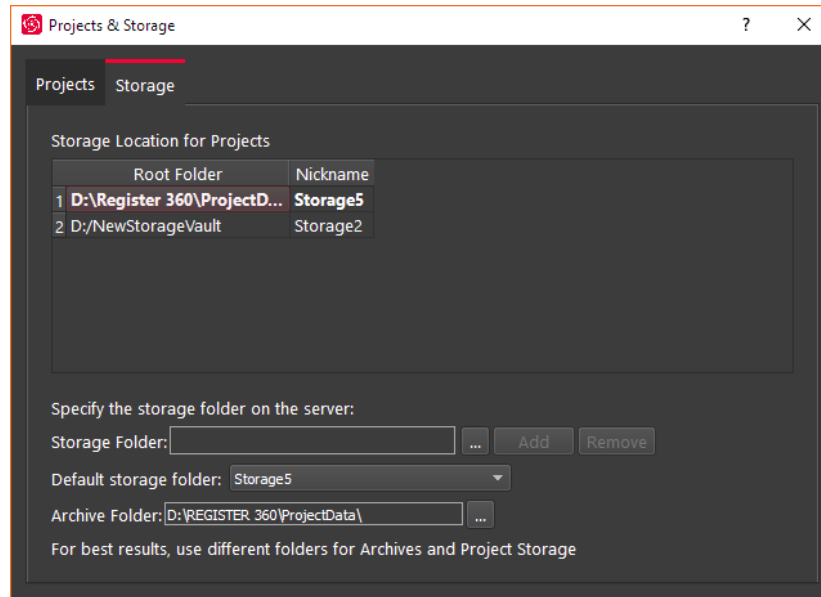


In this view, you can see all the projects that you have stored in your Project storage.

Here you can:

- Manage your saved projects
- Delete projects
- Copy a project to another storage location using the Relocate option.
- Archive or Import a Cyclone REGISTER 360 project (*.raf). To create a .raf file, select the project and click the Archive button.
- Import a saved archive file. To do so, simply place the .raf file inside of your Project Storage directory and then click the Import button. Cyclone REGISTER 360 will then provide you a list of any archive it finds in that location that can be added to your active Projects.

Storage



The Storage tab allows you to configure multiple Project Storage locations. You can use this feature to create and toggle between datasets on multiple drives. For best results, use internal SSD drives and create separate folders for Storage and Archive.

General Registration Information

- Cyclone REGISTER 360 requires 3 matching targets between setups to form a target link.
- Cloud to Cloud links can be used to join setups with less than 3 matching targets.
- Setups included in separate Sitemaps in the Import area will be registered into separate bundles.
- The maximum amount of auto-detected/shown links is 50. This applies to links found after Visual Alignment, Split View, and shown suggested links.
- You must have at least one Sitemap which has all setups in one bundle to proceed to the Finalize area.
- The bundle must be optimized successfully (no dotted Link lines) to proceed to the Finalize area.
- The minimum screen resolution supported is 1280x800.

Import of Scanner data from the RTC360 scanner

Workflow for importing RTC scanner data into Cyclone REGISTER 360

1.1.1 Import RTC360 data

With the introduction of the RTC360, users can now leverage the scanners smart scan data (<https://leica-geosystems.com/products/laser-scanners/scanners/leica-rtc360>) together with in-field processing capabilities of Cyclone FIELD 360 to reduce processing time by taking advantage of the RTC360's on-board processing power.

The RTC360 scanner is equipped with advanced on-board sensors such as motion tracking cameras, INS, GPS, compass, and altimeter to automatically track the location of the scanner. Cyclone REGISTER 360 uses the information obtained from this setup tracking system to automatically align scans collected via RTC360.

Cyclone FIELD 360 is a mobile app for RTC360 scanner control, data management, quality control, data tagging and in-field pre-registration. Pre-registration data is shared back to the RTC360 and transferred to Cyclone REGISTER 360 as part of the data import process. Cyclone REGISTER 360 accepts this pre-registration data to increase the speed and accuracy of the registration process.

Similar to importing data from other scanners, RTC360 data can be imported by using dragging the folder that includes the `project.rtc360` file and the Job folder to the Import area, or using the Browse File command. However, data from the RTC360 and Cyclone FIELD 360 activate new auto-registration options, multimedia, metadata, and geo-location information.

1.1.2 Geolocations of RTC360 Setups

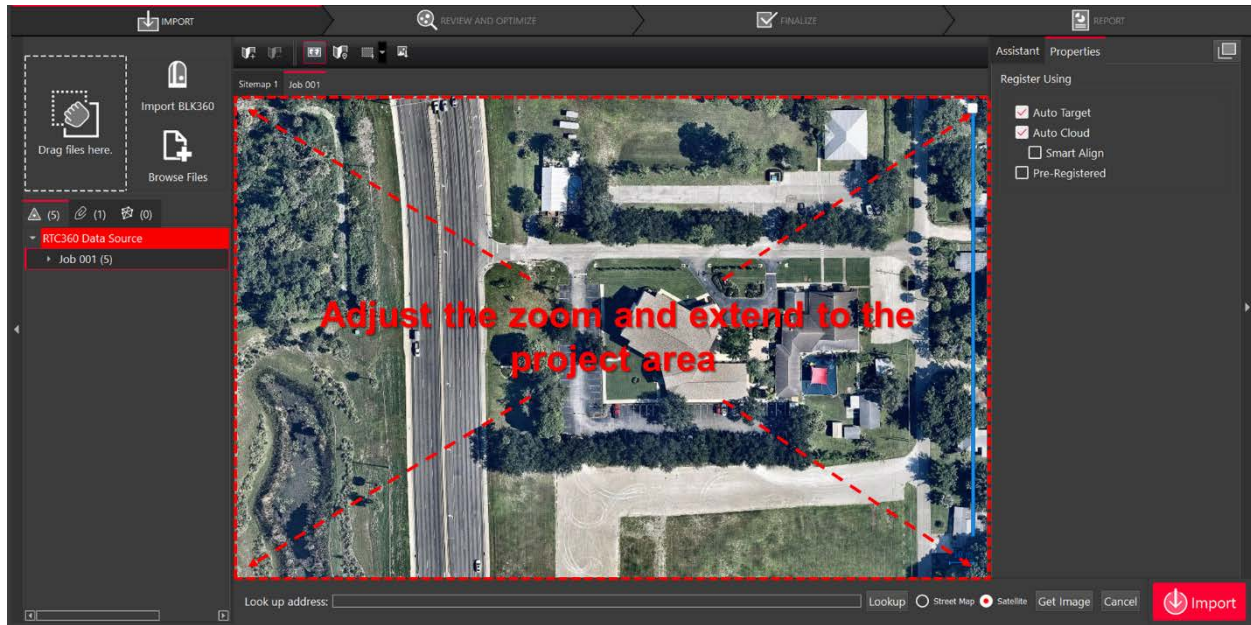
Users may choose to activate GPS information for all data captured with the RTC360. The location of globally positioned setups can be read by Cyclone REGISTER 360 and automatically displayed on the built-in Satellite or street map imagery used for SiteMap creation.

To take advantage of the RTC360 scanner's on-board GPS information with Cyclone REGISTER 360 follow the below steps:

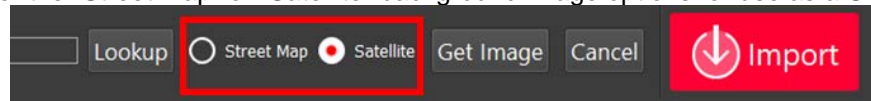
1. Click "Show Geo Image" in the Action Bar, after importing the RTC360 data.
 - o If the setups have GPS location information, the satellite imagery will automatically zoom to the project area for easy SiteMap creation and placement of additional scans.



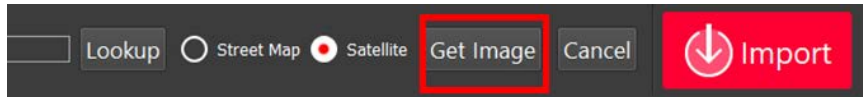
2. Cyclone REGISTER 360 will attempt a best fit of the satellite image based on available data. The user may adjust the zoom level and area extent manually before selecting a view to use as a SiteMap.



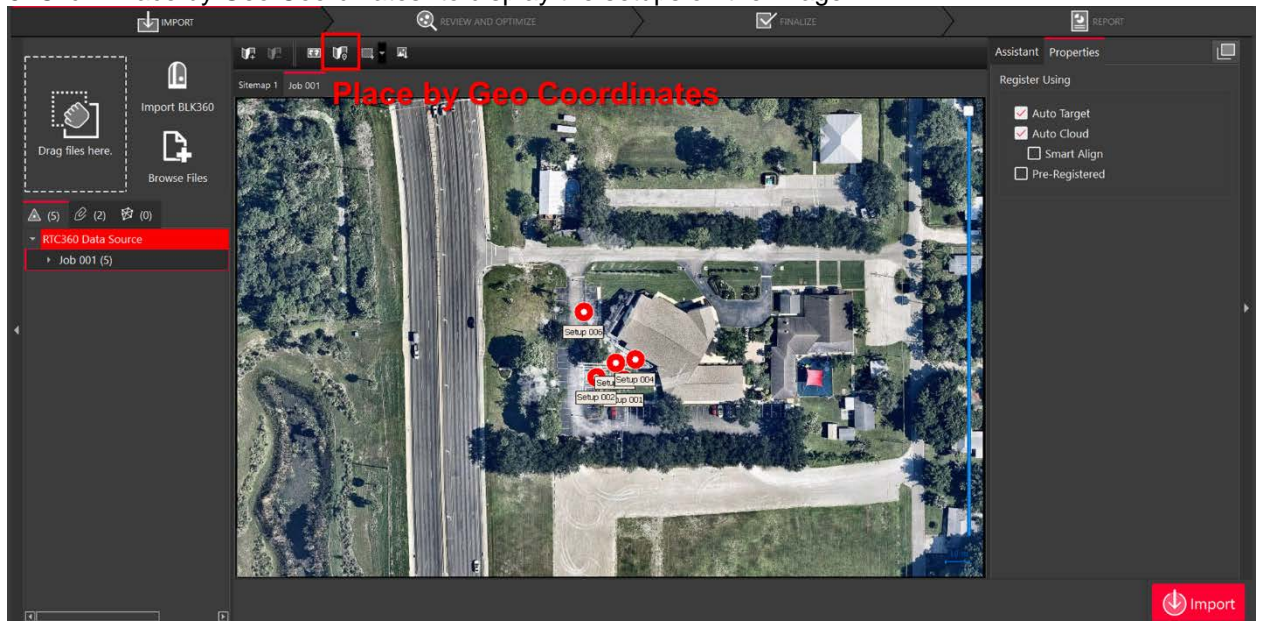
3. Select either the “Street Map” or “Satellite” background image options for use as a SiteMap.



4. Click “Get Image”



5. Click “Place by Geo Coordinates” to display the setups on the image



The geolocation and setup position information from the RTC360 scanner makes it easier for the user to modify bundles, combine jobs, and perform Smart Align.

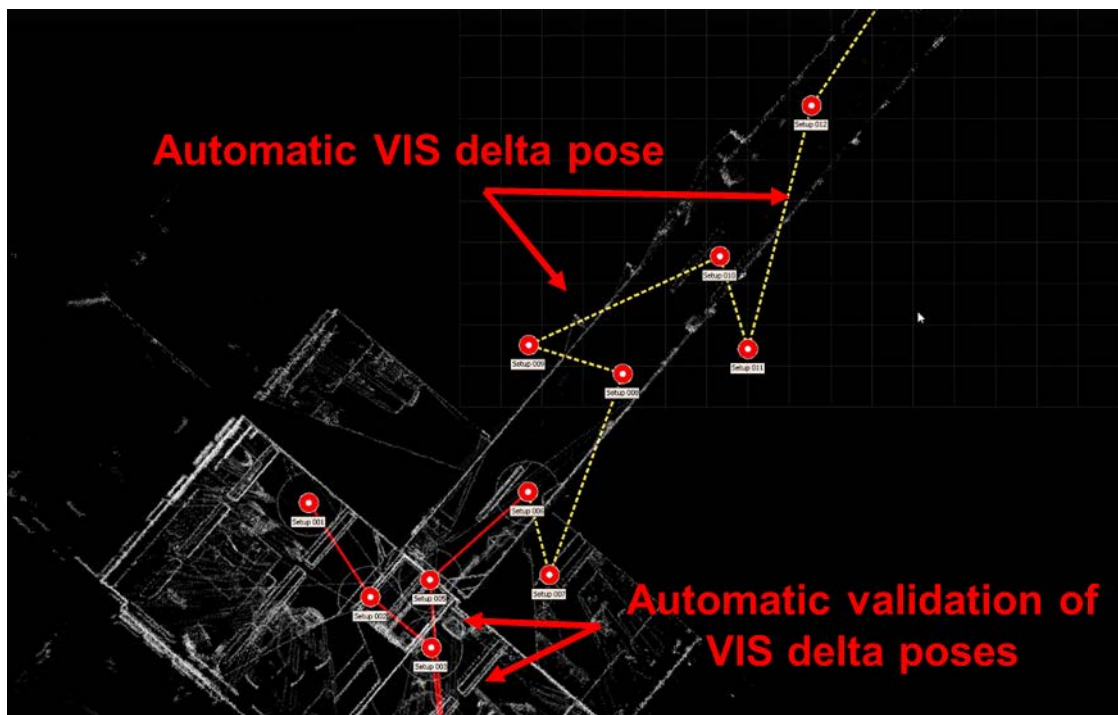
1.1.3 Automatic registration from RTC360

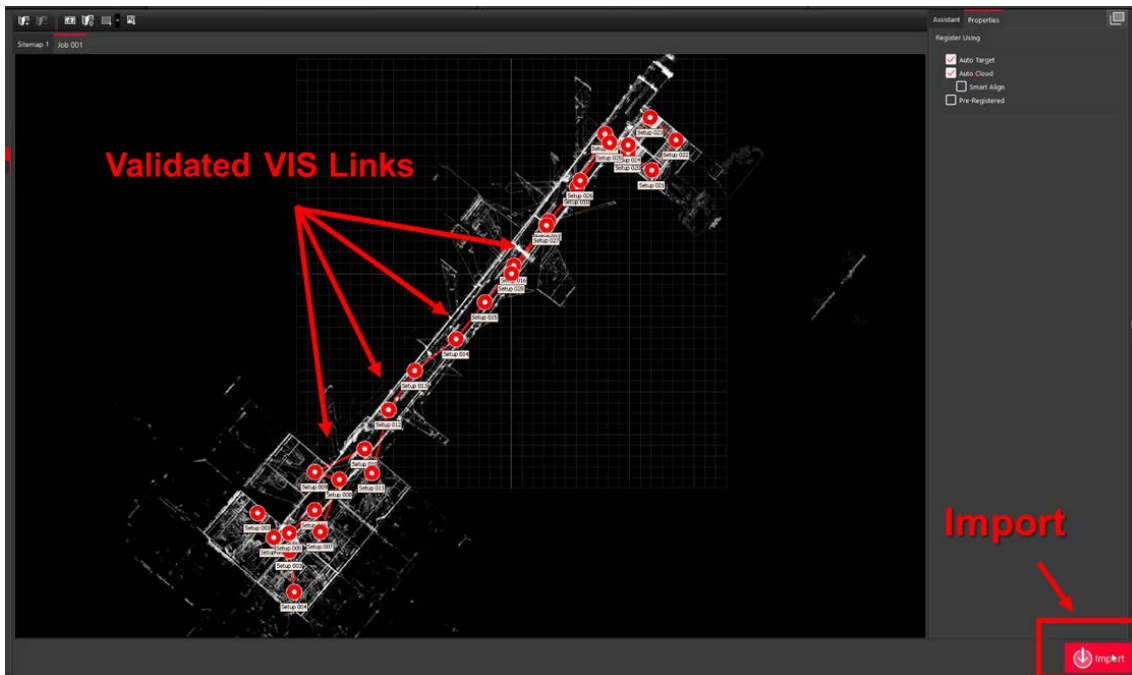
Cyclone REGISTER 360 processes the RTC360 setup positions and Cyclone FIELD 360 pre-registrations for smart and automated registration.

Importing RTC360 Projects without Cyclone FIELD 360

Cyclone REGISTER 360 processes the setup position information from RTC360 to create links that are later used for auto-registration. This is similar to the pre-registration process that takes place in Cyclone FIELD 360, which is detailed below.

1. Upon adding RTC360 data to REGISTER 360, setup positions and assumed links are automatically created in a tentative form as yellow dotted lines (VIS delta poses).
2. The setup positions are then validated for quality.
3. After validation, the VIS Links are changed to trusted links in Cyclone REGISTER 360 and are prepared for importing
4. After importing the data, the links shown.

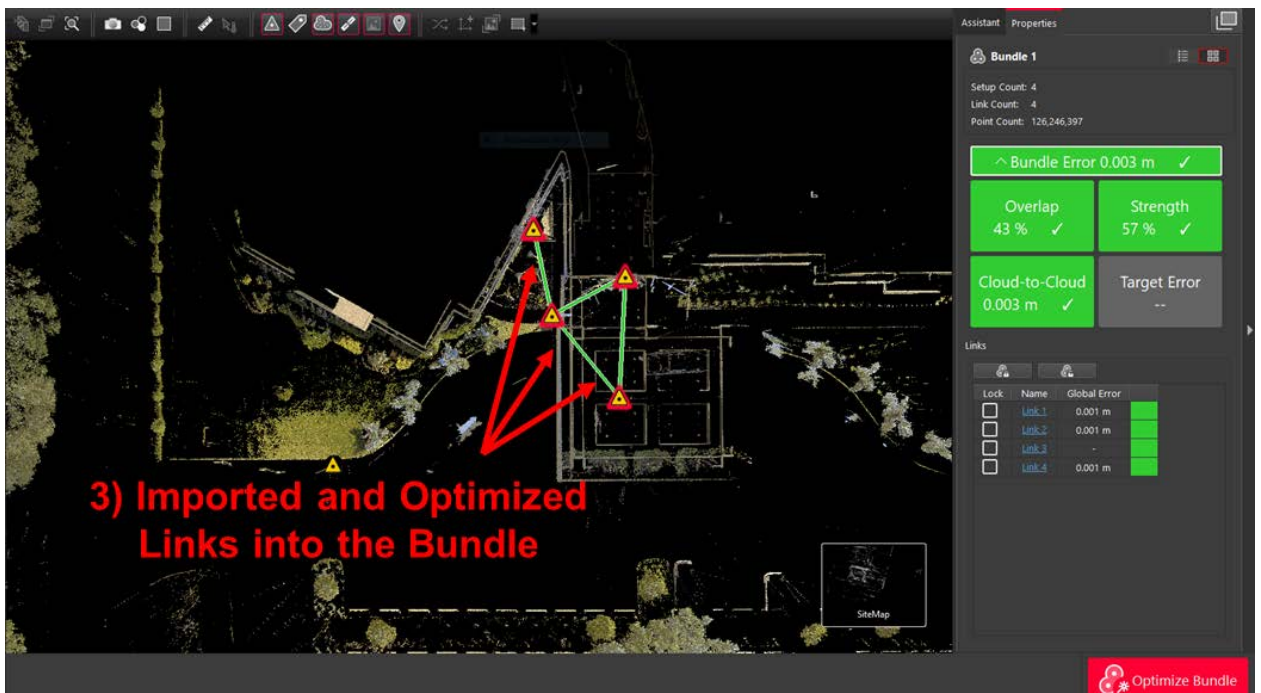
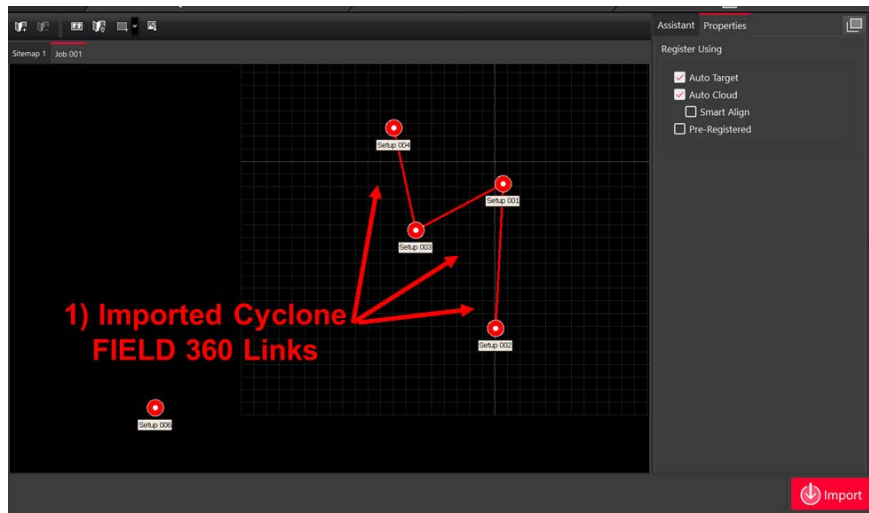




Importing Cyclone FIELD 360 pre-registered projects

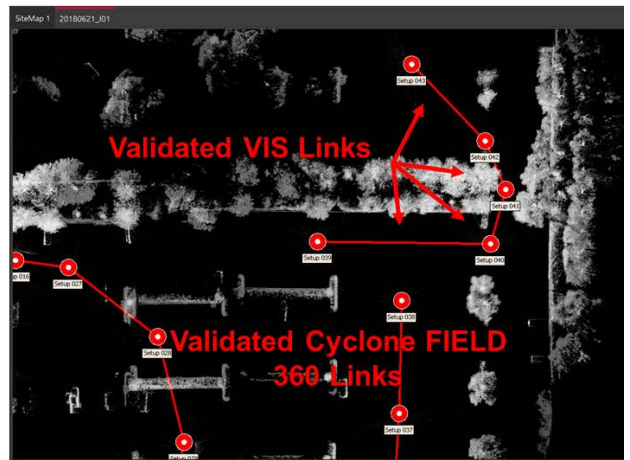
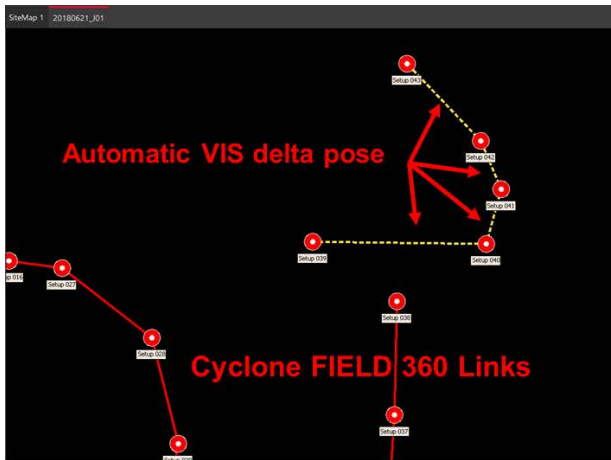
Cyclone REGISTER 360 can also accept data that has been pre-registered in Cyclone FIELD 360. Rather than validating links in Cyclone REGISTER 360, as outlined above, the user will have already validated links in the field, allowing them to import data with links pre-defined.

1. Upon addition of RTC360 data with Cyclone FIELD 360 verified links, the Field360 are imported into Cyclone REGISTER 360.
2. The existing links are revalidated and reoptimized and prepared for import
3. The links are optimized in a bundle



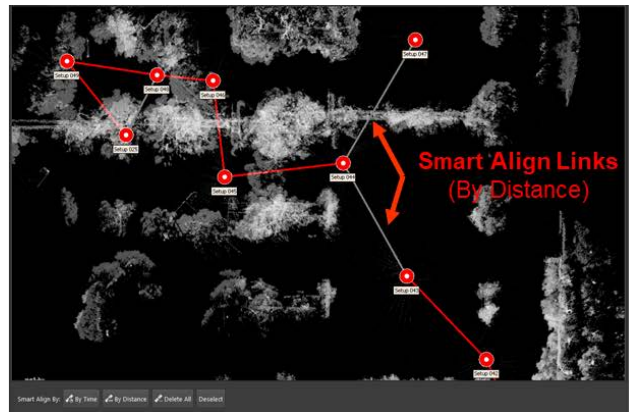
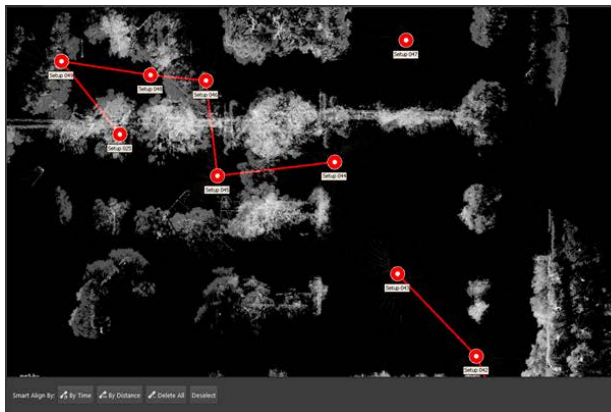
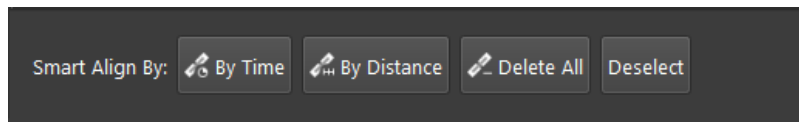
Importing RTC360 projects with both Cyclone FIELD 360 pre-registered links and unvalidated links

It is possible to have a project with a combination of FIELD 360 pre-registered links and unvalidated, assumed links derived from setup position information. For each type of Link, VIS or Field360, the scenarios are accordingly processed to generate the validated links.



SmartAlign

As mentioned in “Registration Options” section in the internal Help In Cyclone REGISTER 360, SmartAlign is a feature that can shorten the time required for Auto Alignment by creating pre-defined links based on time or distance before importing the data



> SmartAlign can be generated based on time and distance together

Modifying Jobs/Bundles

Deleting links

It is possible for the users to accidentally create bad or unwanted links in Cyclone FIELD 360. Cyclone REGISTER 360 can delete those link during the data import if the user didn't remove them via Cyclone FIELD 360.

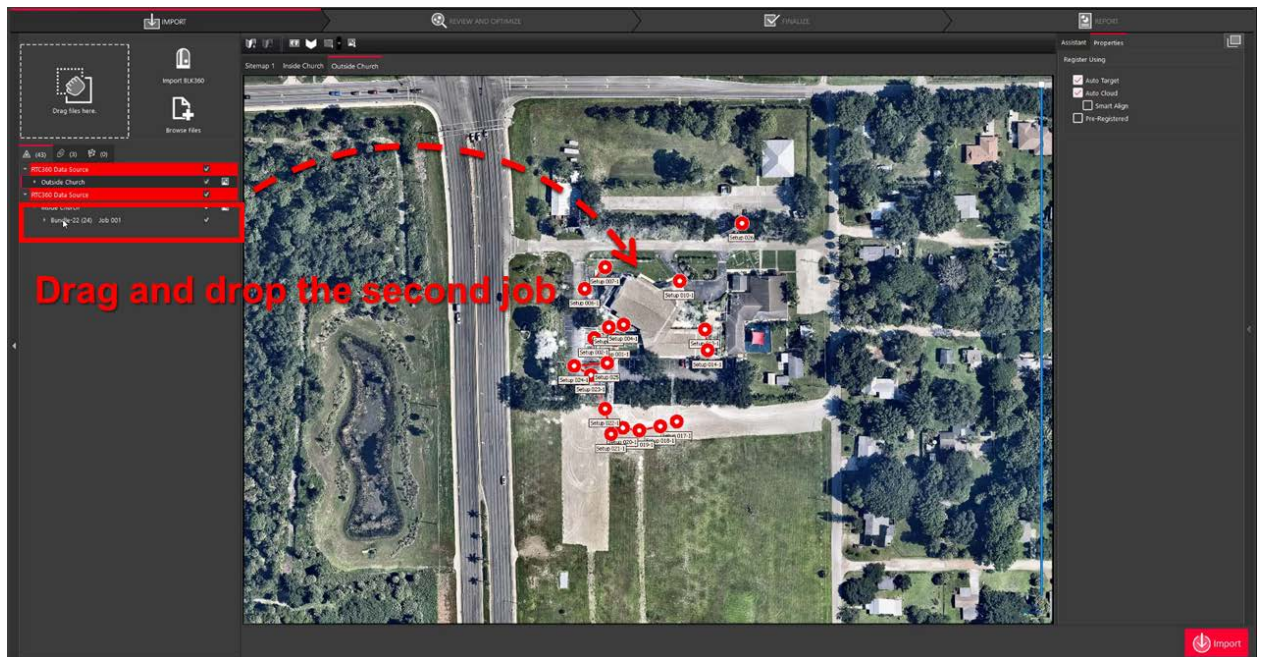
1. Selecting a link.
2. Click on “Delete Link”, which appears only after a link is selected.

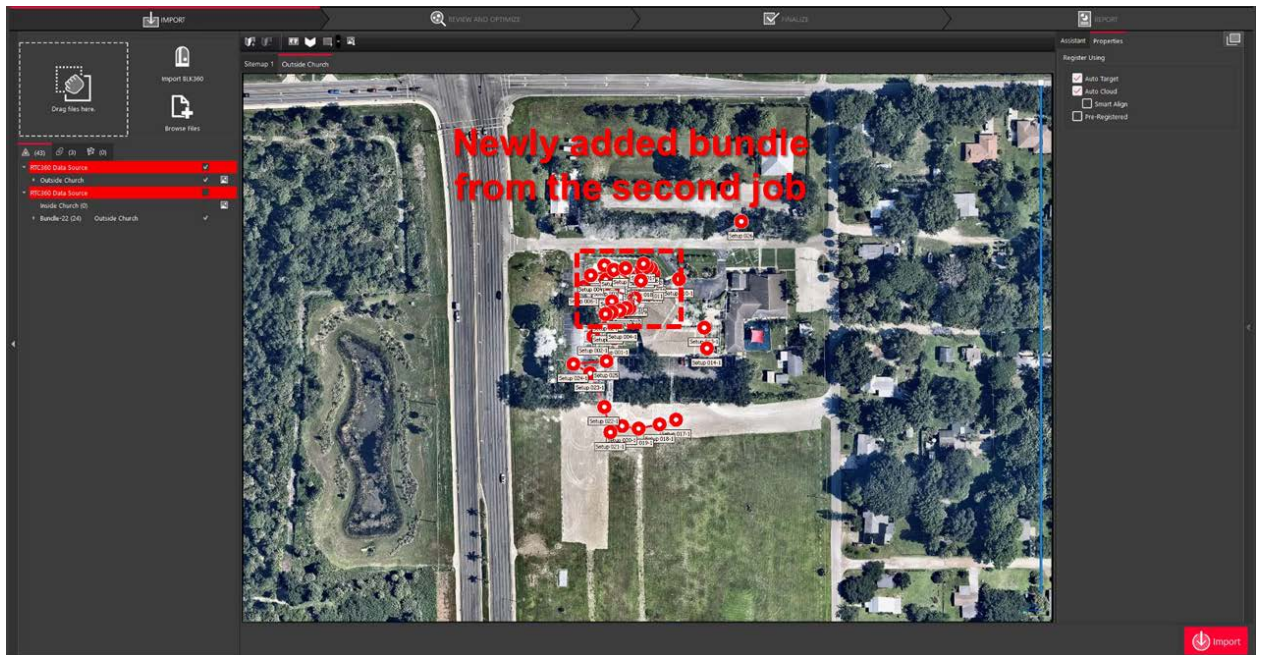


Combining Jobs

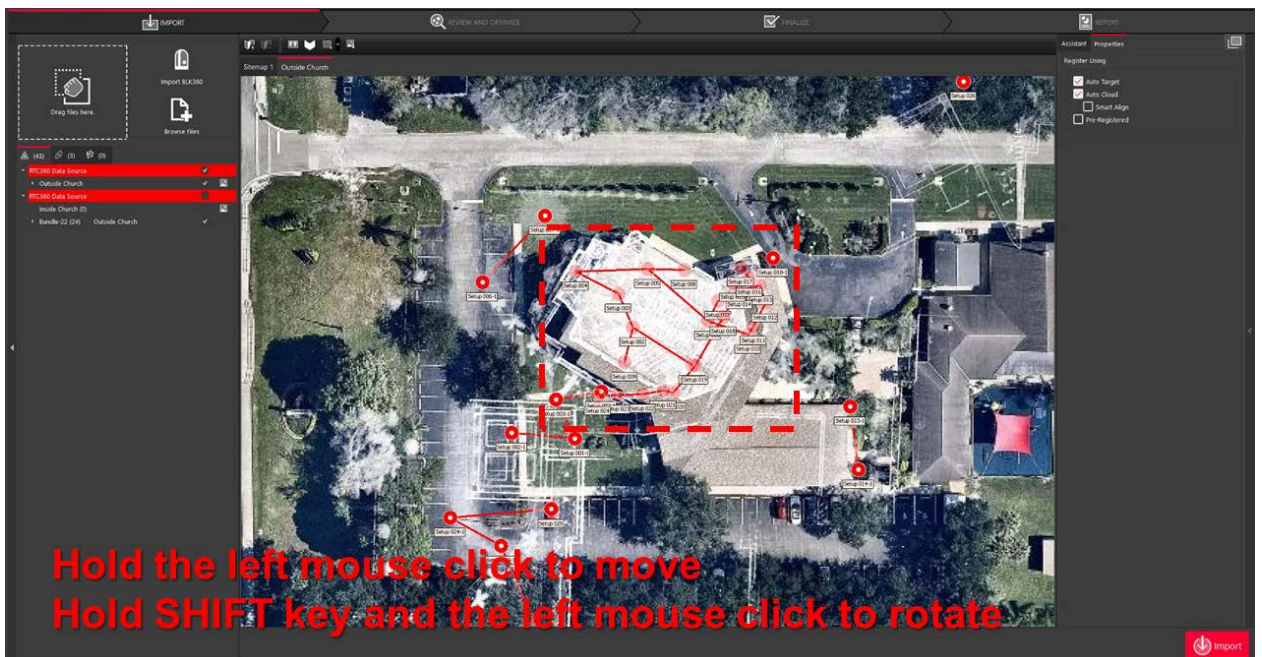
The user may also combine multiple RTC360 jobs within a Cyclone REGISTER 360 project. To add another job to an existing project, follow the steps outlined below:

1. Open an existing project containing the first job.
2. Add the second job via drag-and-drop or browsing to the data.
3. Select the second bundle from import bar and drag the bundle on to the SiteMap.



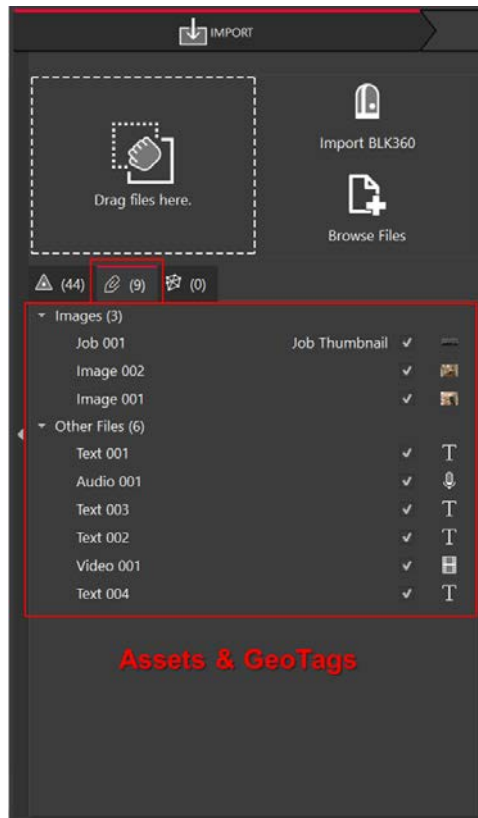


4. To move a bundle, select one of the scans in the bundle with the left mouse button and drag. To rotate a bundle, select one of the scans in the bundle and hold the SHIFT key while pressing the left mouse button then drag clockwise or counterclockwise to adjust the rotation of the entire bundle.



Importing Tags and Assets from Cyclone FIELD 360

Tags and assets from Cyclone FIELD 360 are imported to the dataset along with the other scan data. Tags and assets are published as part of an LGS file for use downstream in TruView, JetStream and CloudWorx as GeoTags to enable smarter data access.



1.1.4 Double Scan Cleaning

Cyclone REGISTER 360 automatically compares two scans taken by the RTC360 when the “double scan” option is enabled and filters out points that are not common to both scans prior to import. Double scan cleaning reduces noise to improve the accuracy of a project during import and saves the user time during cleaning.

1.1.5 HDR Panoramic Images

REGISTER 360 takes full advantage of the RTC360's camera array for unparalleled image fidelity and use downstream in TruView and JetStream. Users can adjust the exposure of images within Cyclone REGISTER 360.

1.1.6 HDR point clouds

If all the data is from the new RTC scanner the point cloud will show HDR color. Allowing the user to adjust the brightness of the point cloud with a slider in the main view area in Bundle View

Import

3. You will now find yourself in the **Import** stage. You will notice on the left that there are three ways to bring data into Cyclone REGISTER 360.



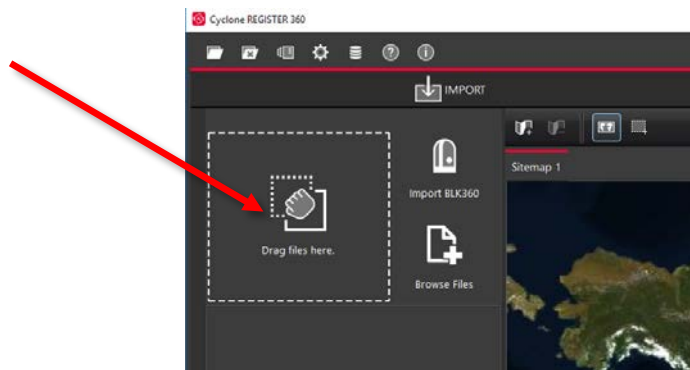
3.1. Cyclone REGISTER 360 can accept the following types of scan, image and text files:

File Types	Supported Formats
Binary Point Clouds	.e57 .ptg
Control File	.txt containing: Point number Northing Easting Elevation Comment
Imagery	.bmp .jpeg .png
FARO TLS data	.fls .fpr .fws FARO Raw
Leica HDS scanner data	BLK360 (direct via WiFi or .blk files from the BLK360 Data Manager utility) C-Series

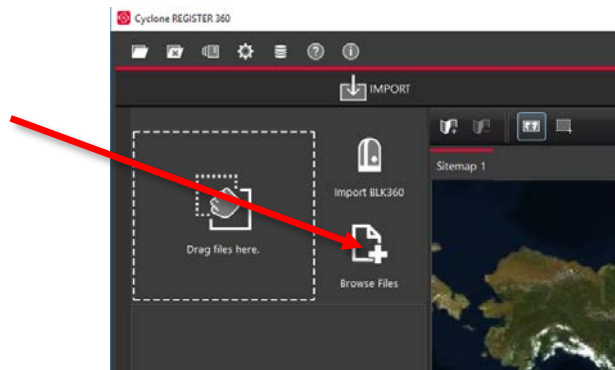
	P-Sereis
Text	.ptx
Z+F	.zfc
	.zfs
	.zfpj

3.2. Different file types do not need to be added separately; they can all be added and imported together.

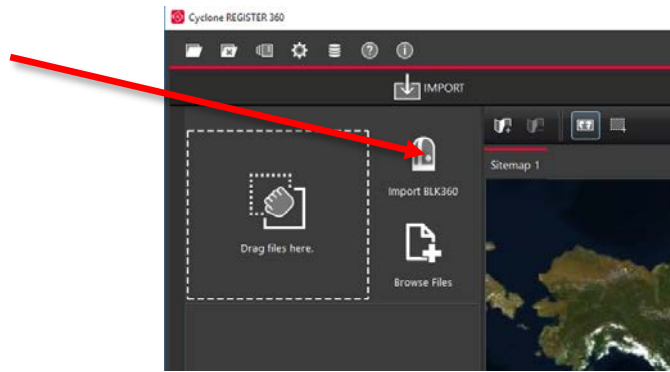
3.3. “Drag files here” allows you to drag-and-drop individual files, or a folder containing files, into the software.



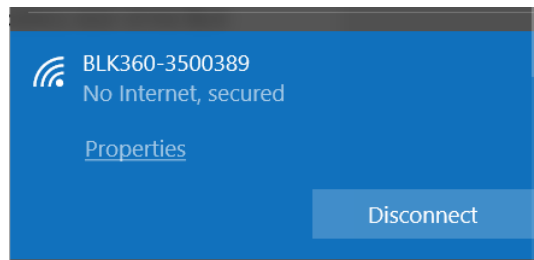
3.4. “Browse Files” will launch a Windows File Explorer window through which you can navigate to the files to be imported.



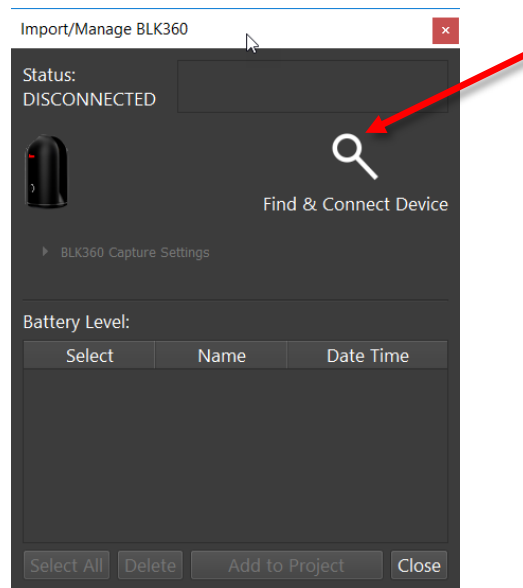
3.5. “Import BLK360” will launch a new Cyclone REGISTER 360 window that will allow you to connect to a local BLK360 Imaging Scanner and select individual files to import.



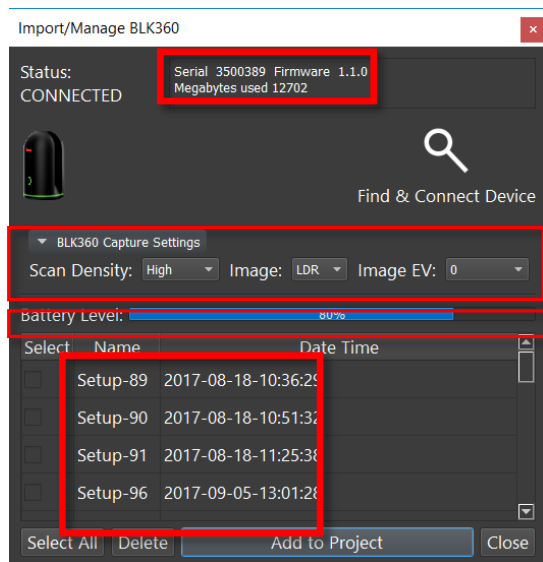
3.5.1. Connect your computer's wifi to the BLK360 using the windows wireless connection (Windows 10 is used in this example). The wireless password is located on the inside of the battery door of the BLK360 scanner.



3.5.2. Click "Find & Connect Device"

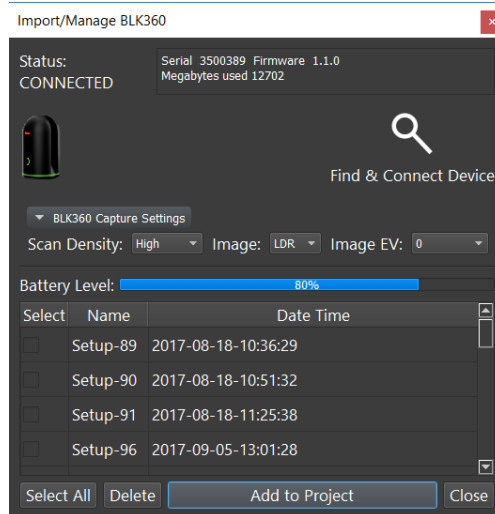


3.5.2.1. Once connected a list of scans is shown along with the Battery level, Serial number of the scanner, firmware version, memory used and Capture settings.

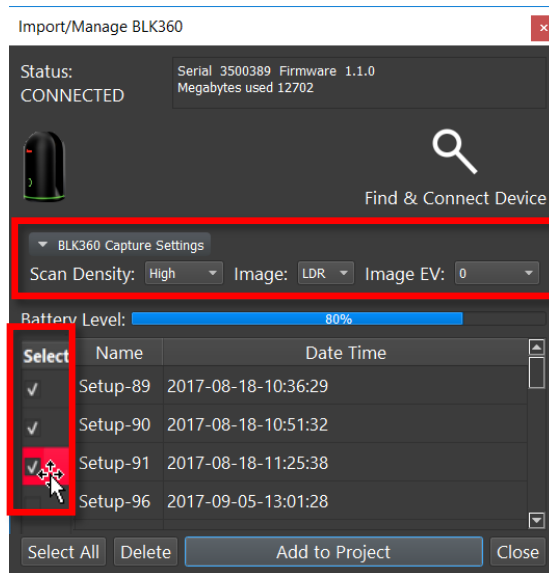


The scanner must have at least 20% power to enable the Download button.

3.5.2.2. Select the scans to import by marking the check boxes next to each setup. Selecting scans in the BLK360 import dialog will check the scans for import in the Cyclone REGISTER 360 import area though all scans will be visible within the import area. Click "Download" when you have identified the scans you wish to work with.



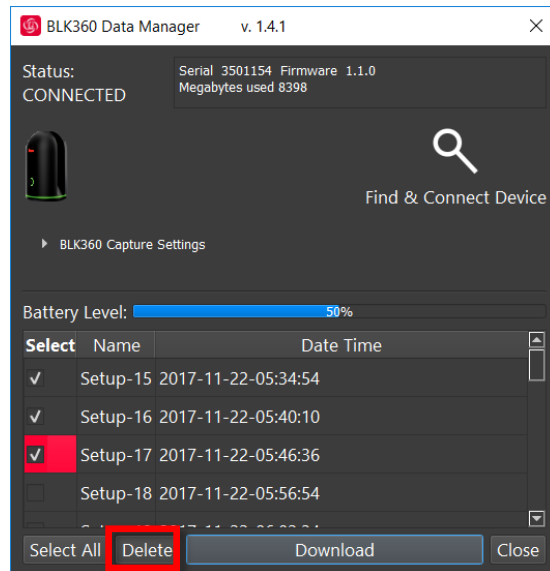
3.5.2.3. Capture settings can be changed in this dialog. Use the pull downs to select scan density (high, medium, low), image quality (LDR or HDR) and Image exposue (EV-5 to +5).



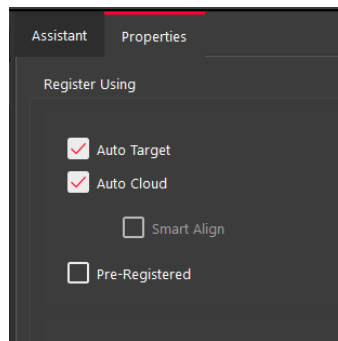
3.5.2.4. The **Add to Project** button will always display all scans within the Cyclone REGISTER 360 import area, however only scans which were selected within the import dialogue will be queued for import. The image below shows the three scans selected for import above checked for import.



3.5.2.5. You may also delete scans from your BLK360 from within this window. Select the scans by checking the boxes to the left of the scans and the click the **Delete** button. Once scans are deleted, they are permanently removed from the device so the user may wish to download them locally via the BLK360 Data Manager as a backup before any deletion from the machine.



4. Once you have added your data via one of the methods noted above, you will also notice on the right that there are three options for how to register the data you are bringing in which can be used for any of the above import types.



- 4.1. “Auto Target” should be used when Black and White targets are present within the data set. Cyclone REGISTER 360 will automatically search for these targets and register the setups based on those shared targets. Targets do not need to be picked, labelled or matched. Cyclone does it all automatically.
- 4.2. “Auto Cloud” should be used when importing unregistered data that does not contain targets. This setting will conduct a preliminary cloud-to-cloud alignment and register the setups based on shared geometry between scans. You do not need to pick this option. Cyclone REGISTER 360 does it all automatically.
 - 4.2.1. “SmartAlign” is a tool that will aid the Auto-Cloud search by lowering the number of links to search by only searching the links specified by the user. All setups not identified by the user will be compared to all other setups. Once SmartAlign is selected, links can be created between setups by time, distance, or by manually dragging one setup to another.

Note! The SmartAlign option will not be enabled unless a background image is in use (blank is fine) and setups have been dragged into the Sitemap area.

- 4.3. "Pre-Registered" should be used for data that has already been registered in another application. This setting will maintain the alignment and transformations present within that data set and generate the link objects unique to Cyclone REGISTER 360.
- 4.4. If no options are checked, Cyclone REGISTER 360 will import the files but will not attempt to form any links.
- 5. The last section of the import stage is the map tool. This map can be used to acquire a satellite image to serve as a sitemap for the project. (Optional).



5.1. You must be connected to the internet to use the map.

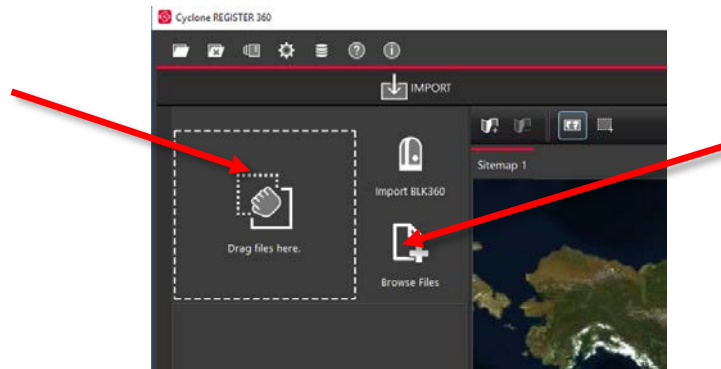
5.2. You can scroll to a known location or enter a street address, city name, or ZIP code. You must then click "Lookup" to search the map.



5.3. Once you are satisfied with the positioning of the image on screen, click "Get Image" to save the screen and automatically set it as your sitemap background image.



5.4. If you wish to use your own image as a sitemap, you can add that image via the "Drag files here" or "Browse Files" options.

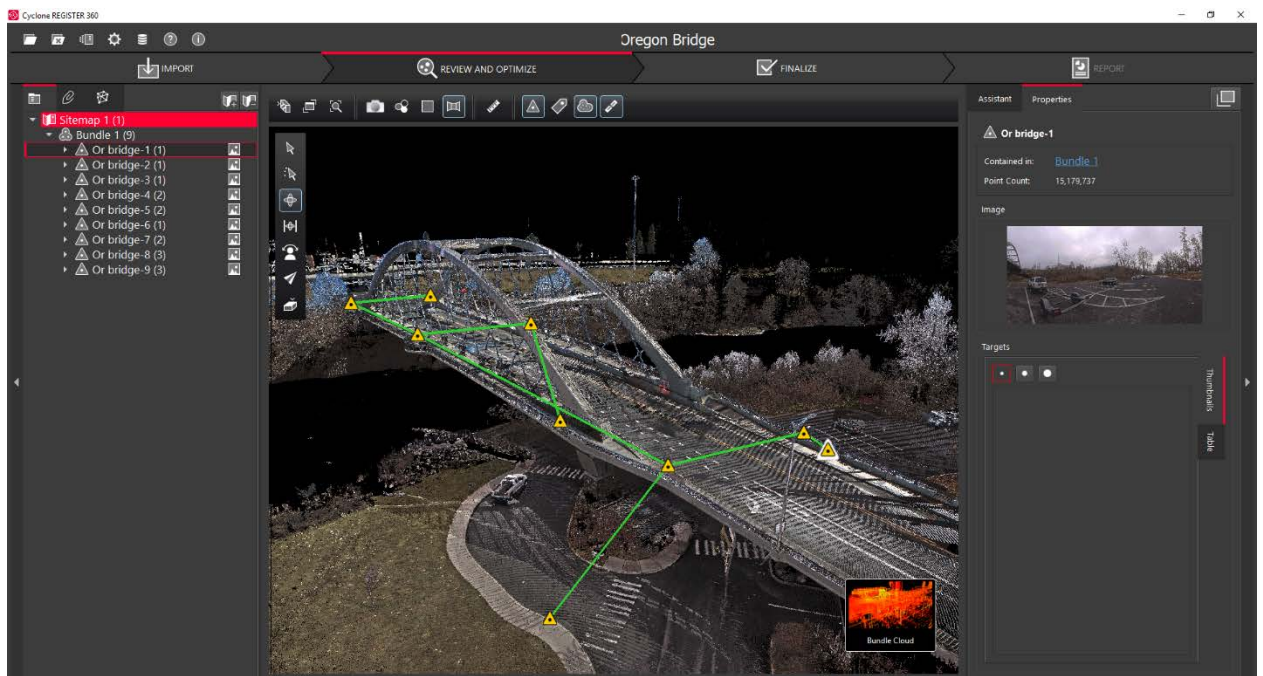


6. Once you are satisfied with the data that has been added and made the appropriate selections regarding registration options, click the large, red “Perform Import” button in the lower right corner of the screen.

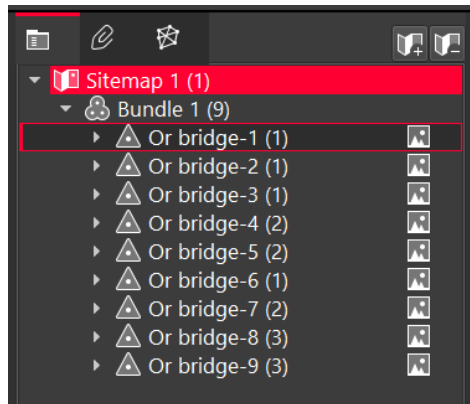


Review and Optimize

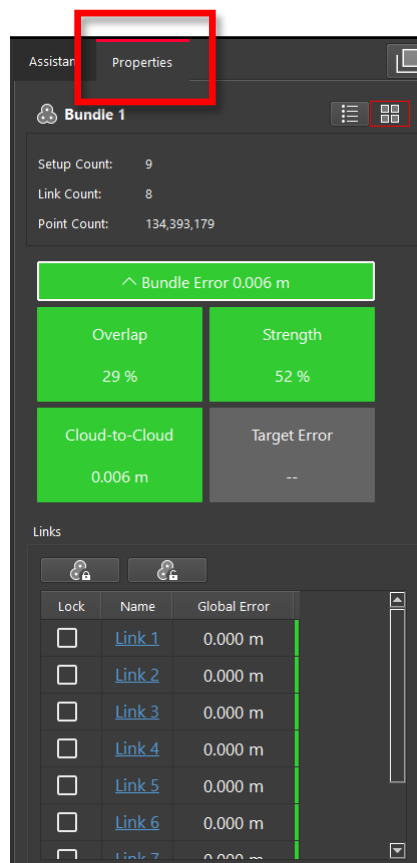
7. Once the import is complete, the user will be placed within the **Review and Optimize** stage. Here, they can QA and refine the registration and produce assets to include within the final Registration Report.



7.1. On the left-hand side, you will see a complete directory of all data within the project, clustered under three tabs: “Project” which contains sitemaps, bundles, setups, and links, “Assets” which includes all image assets both imported and those created via the “Capture Screen” button, and “Controls” which includes any imported .txt files containing survey control information.



7.2. The user can access the properties for an object by selecting that object in the project panel and viewing the “Properties” panel on the right-hand side of the screen.



7.3. The “Properties” panel can be viewed with “Advanced Mode” On or Off depending on whether the user wishes to see a more graphical or more tabular summary of their data. The Advanced mode also offers additional link options.

Assistant Properties

Bundle 1

Setup Count: 9
 Link Count: 8
 Point Count: 134,393,179
 Bundle Error: 0.006 m

Error Measurements

Cloud-to-Cloud represents the Absolute Mean Error.

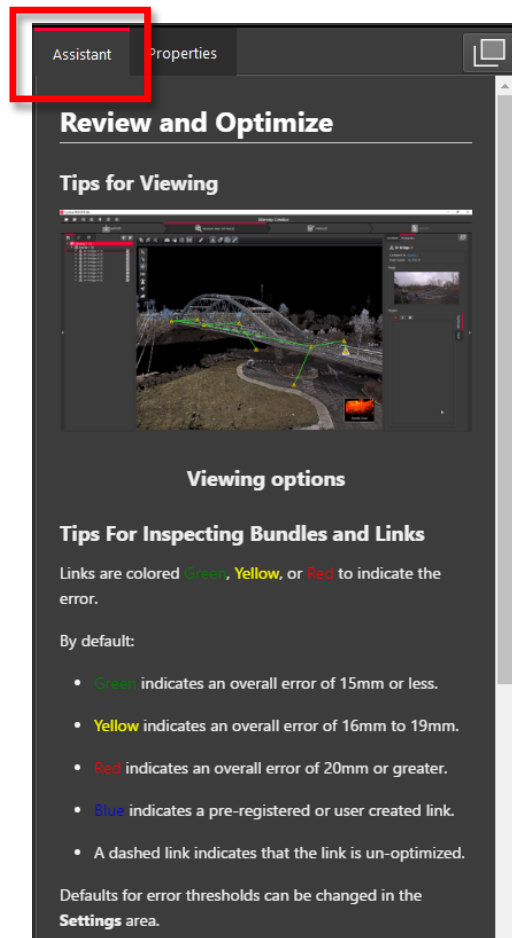
Global Error	Loop Error	Cloud2Cloud
0.000 m	0.000 m	0.006 m

Links

Cloud-to-Cloud represents the Absolute Mean Error.

Lock	Name	Global Error	Cloud-to-C
<input type="checkbox"/>	Link 1	0.000 m	0.004 r
<input type="checkbox"/>	Link 2	0.000 m	0.004 r
<input type="checkbox"/>	Link 3	0.000 m	0.013 r
<input type="checkbox"/>	Link 4	0.000 m	0.007 r
<input type="checkbox"/>	Link 5	0.000 m	0.004 r
<input type="checkbox"/>	Link 6	0.000 m	0.004 r
<input type="checkbox"/>	Link 7	0.000 m	0.007 r
<input type="checkbox"/>	Link 8	0.000 m	0.014 r

7.4. Next to the “Properties” panel, the “Assistant” panel contains specific advice and information pertaining to each stage of the registration.



7.5. Within the Review and Optimize stage, the user may refine their registration through a variety of tools.

7.5.1. The user can delete setups and links and re-form them.

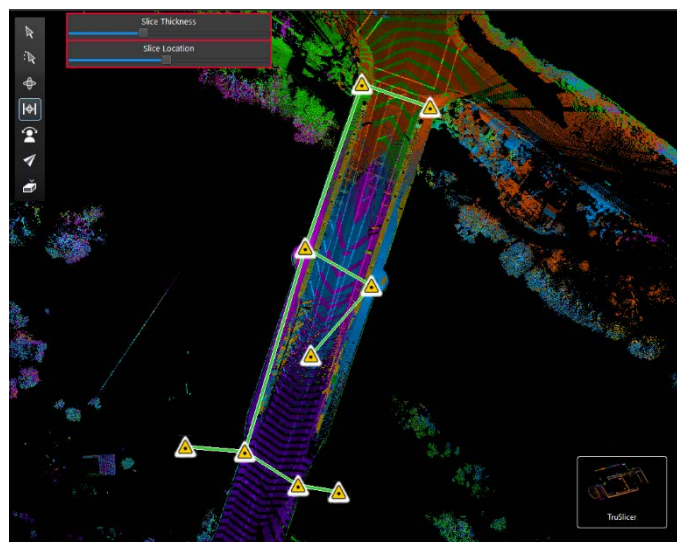
7.5.2. The user may also refit targets at this stage to improve the registration.

7.5.3. The user can set a unique User Coordinate System to orient their project for better viewing.

7.6. The user may view their project either as a “Sitemap” (2D, top-down) view, or as 3D cloud by hovering over the icon in the lower right-hand corner of the workspace and selecting the appropriate viewing option.



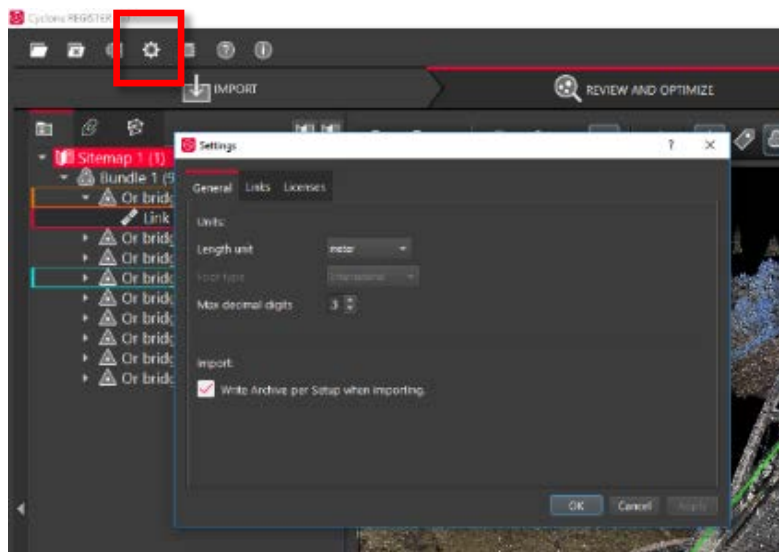
7.6.1. The user should use the “TruSlicer” view to QA their registration. The point clouds from each setup will be colored differently. A good alignment will show a thorough intermixing of colored points and matching geometry in areas of overlap. The user can control the thickness and location of the slice via the sliders at the top left of the workspace.



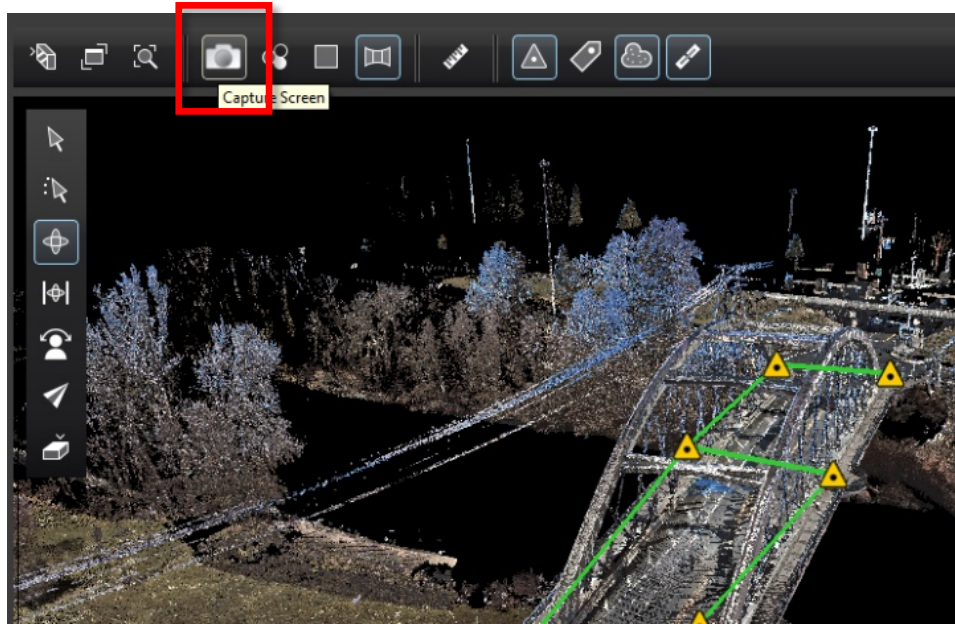
7.7. Depending on the user’s selection, a “Navigation” bar may appear in the top left of the workspace or an “Action Bar” at the bottom that will enable different tools that are only accessible with the user’s present selection.



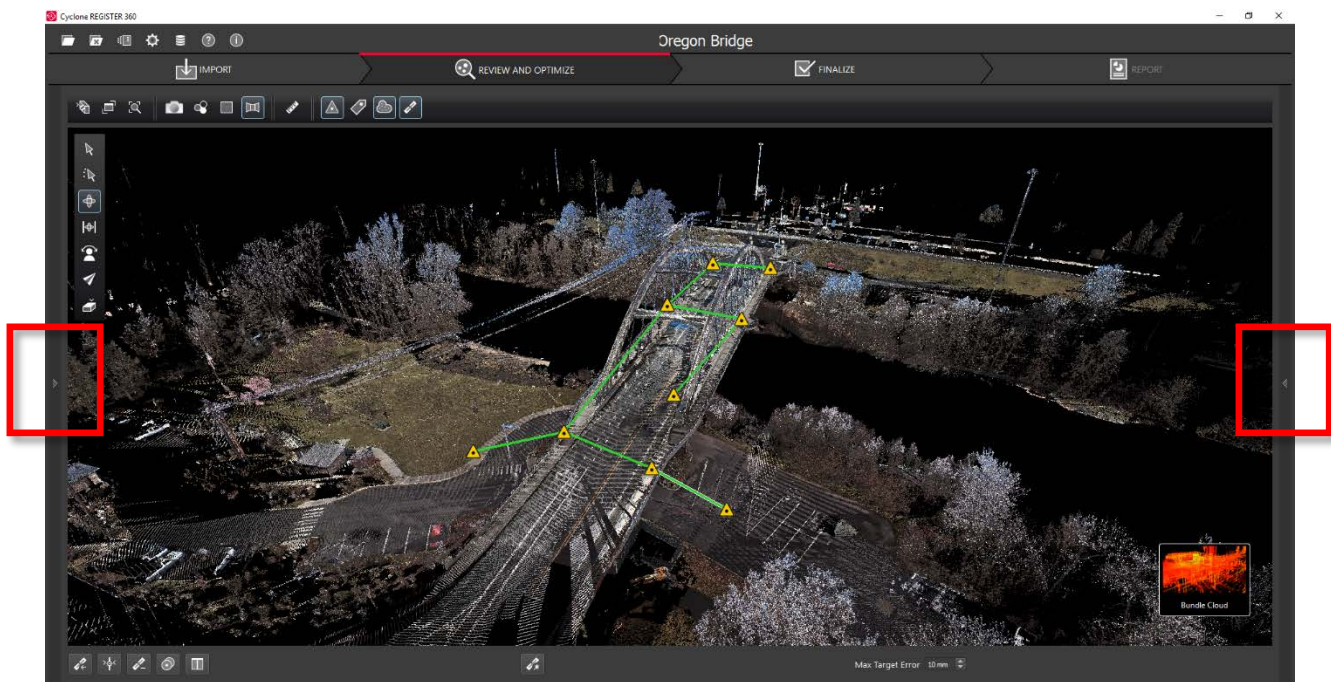
7.8. At any point, the user may access their “Settings” by clicking on the gear icon at the very top left of the screen to change units and set the error threshold for green, yellow and red links.



7.9. At any point, the user may click the “Capture Screen” button to save an asset which can chosen to include in their final Registration Report. These assets will appear in the “Asset” tab in the project panel at left.

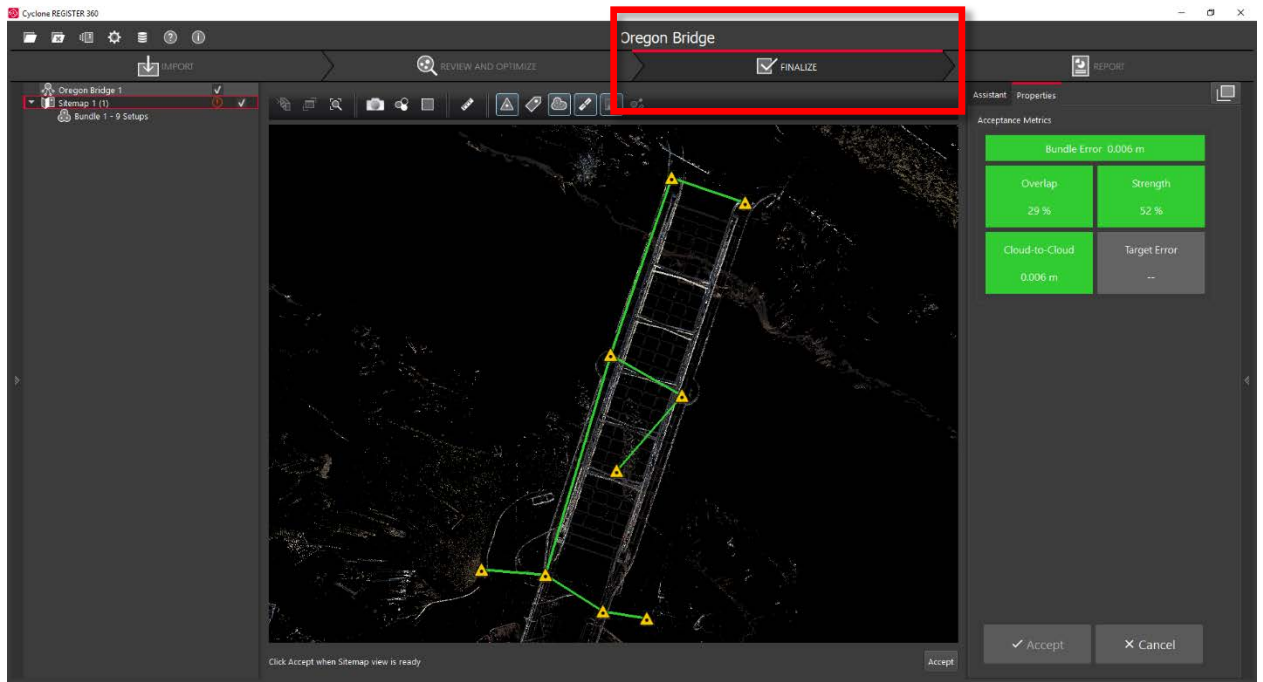


7.10. To increase working space, the user may collapse either or both side panels by clicking the arrow at the sides of the panel.

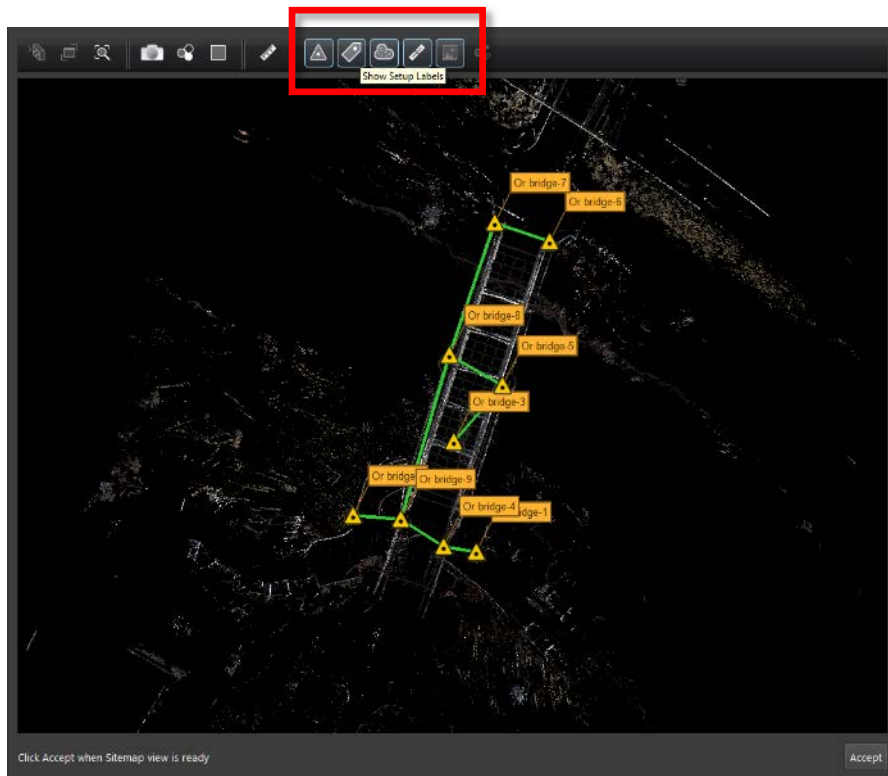


Finalize

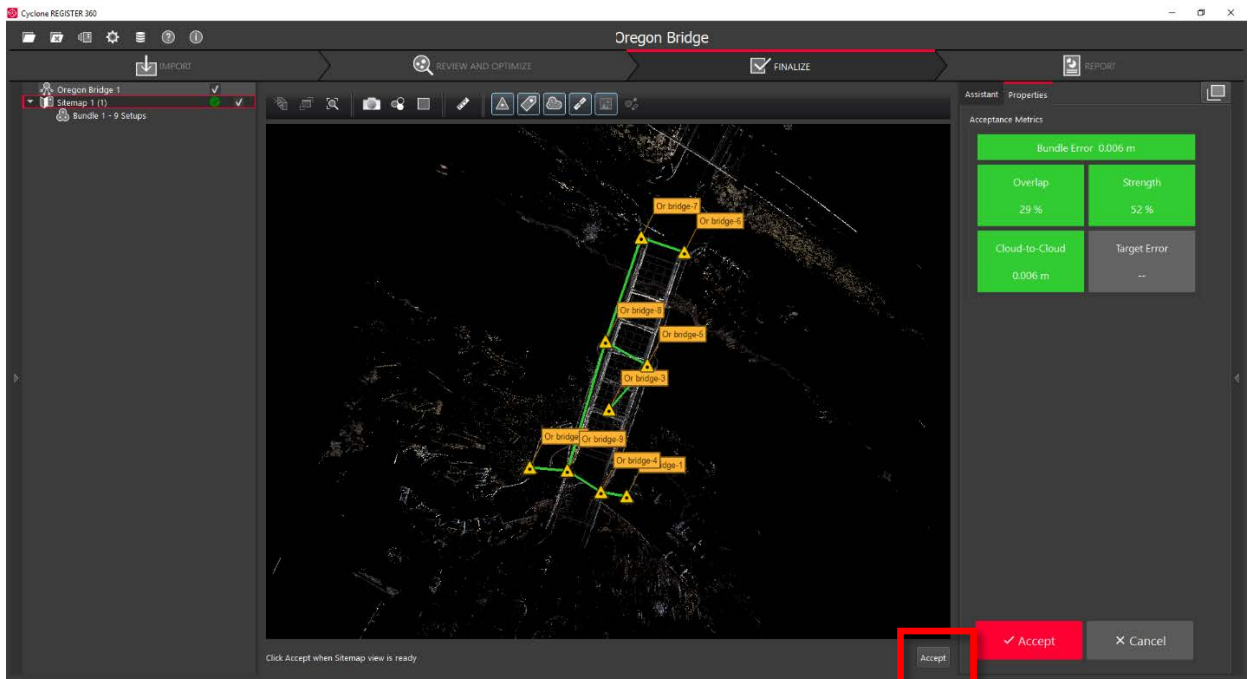
8. Once the user is satisfied with their registration, they may move on to the **Finalize** stage by clicking the "Finalize" bar at the top of the screen.



8.1. Within the “Finalize” stage the user can make final adjustments to the presentation of their project by turning On or Off the point cloud, setups, links, sitemap, and setup labels.



8.2. When the user is satisfied with the presentation of the image, they may click “Accept” in the Action Bar. This will freeze the image on screen to serve as the Registration Report cover image.

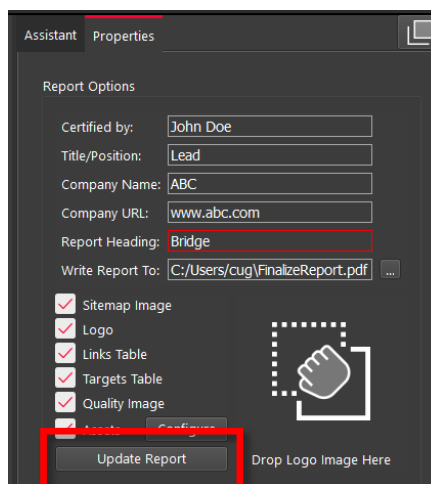


8.3. Then click the large, red “Accept” button in the Properties panel to advance to the Report stage.

Report

9. Within the **Report** stage, the user will have many customization options.

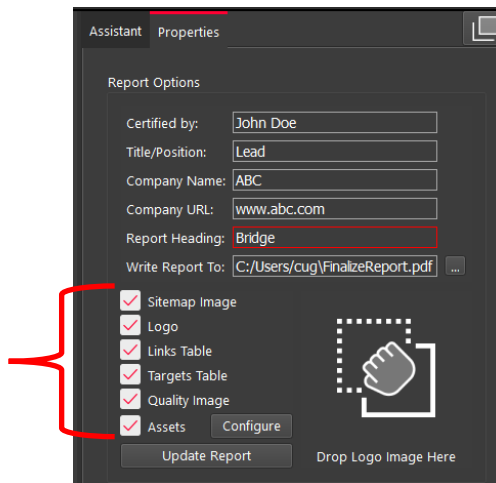
9.1. They may enter their name under the “Certified by” line as well as their Title or Position, Company Name, and URL as well as a Heading for the Registration Report. To update the Report with this information, click “Update Report.”



9.2. The user may also select what they want to include within their report by checking or unchecking the boxes for the sitemap image (the large image captured in the Finalize stage), a logo (which

they can add via Drag-and-Drop next to the check boxes, the Links Table, Targets Table (histogram of errors for links displayed as a matrix of setups), and Assets. To select or deselect individual assets for inclusion, the user may click “Configure.”

Check the desired options here.

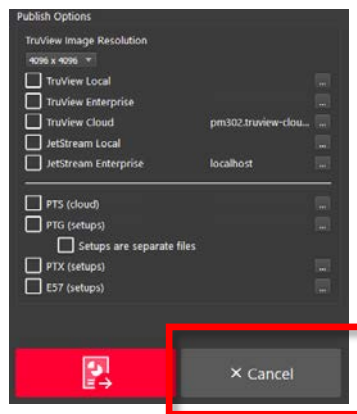


9.3. Lastly, the user has many publishing options for how they wish to share their project. The Registration Report will always be created as a .pdf, however the user can choose to optionally publish their project to TruView Local or TruView Enterprise if they have a Cyclone TruView PUBLISHER or Cyclone PUBLISHER Pro License, TruView Cloud if they have a TruView Cloud subscription, JetStream Local or JetStream Enterprise if they have a Cyclone JetStream PUBLISHER or Cyclone PUBLISHER Pro License, or as an.e57 file.

Desired Data Destination	Required License	Required Product
Cyclone	Cyclone REGISTER or Cyclone MODEL or Cyclone SURVEY	Cyclone 9.2 or newer
TruView Local	Cyclone TruView PUBLISHER or Cyclone PUBLISHER Pro	TruView Local (ActiveX plugin for Microsoft Internet Explorer)
TruView Enterprise	Cyclone TruView PUBLISHER or Cyclone PUBLISHER Pro **Creates *.tvg files for upload	TruView Enterprise <i>*TruView Enterprise 3.0 or newer is required for support of Cyclone REGISTER 360 Projects with multiple sitemaps.</i>
TruView Cloud	Active TruView Cloud Subscription	TruView Cloud Subscription service <i>*TruView Cloud 3.0 or newer is required for support of Cyclone REGISTER 360 Projects with multiple sitemaps.</i>
JetStream Enterprise	Cyclone JetStream PUBLISHER or Cyclone PUBLISHER Pro	JetStream Enterprise 1.4 or newer and desired compatible viewer/plugin (JetStream Viewer, CloudWorx or MultiWorx product)
JetStream Local/Viewer	Cyclone JetStream PUBLISHER or Cyclone PUBLISHER Pro	JetStream Viewer 1.4 or newer JetStream Viewer 1.4.1 or newer if HDR imagery is desired

	**Creates *.jsv files for viewing point clouds and imagery in JetStream Viewer	
E57	No additional license required	E57 compatible products of users' choice
PTX	No additional license required	PTX compatible products of users' choice
PTS	No additional license required	PTS compatible products of users' choice
PTG	No additional license required	PTG compatible products of users' choice
LGS	Cyclone PUBLISHER Pro	Cyclone 9.3 or newer, JetStream Viewer or Enterprise 1.5 or newer, TruView 3.6 or Newer, CloudWorx 2.2 for Revit, CloudWorx 1.1 for Navisworks, CloudWorx 6.4 for AutoCAD, CloudWorx 1.0 for BriocsCAD, 3DReshper

9.4. The user should select all of the publication outputs they wish to produce from this list and then click the large, red “Publish” button in the properties panel. This will allow for single, batch publishing of all your selected outputs.



9.5. All of the outputs will be created and saved to the location designated by the user.